

Installation Manual
Oracle FLEXCUBE Universal Banking Islamic Loan
Origination
Release 14.6.0.0.0
Part Number F59487-01
[July] [2022]

Table of Contents

- 1. ORACLE FLEXCUBE UNIVERSAL BANKING ISLAMIC LOAN ORIGINATION INSTALLATION. 1-1
 - 1.1 INTRODUCTION 1-1
 - 1.2 DEPLOYMENT MODE 1-1
 - 1.2.1 *Centralized*..... 1-1
 - 1.3 ORACLE FLEXCUBE UNIVERSAL BANKING ISLAMIC LOAN ORIGINATION INSTALLATION 1-2
 - 1.3.1 *Merging the BPEL folder*..... 1-2
 - 1.3.2 *Merging the OR folder*..... 1-3
 - 1.3.3 *Merging the MAIN folder* 1-3
 - 1.3.4 *Merging the WS folder (FCUBSORService)*..... 1-4
 - 1.3.5 *Installation Process* 1-4

1. Oracle FLEXCUBE Universal Banking Islamic Loan Origination Installation

1.1 Introduction

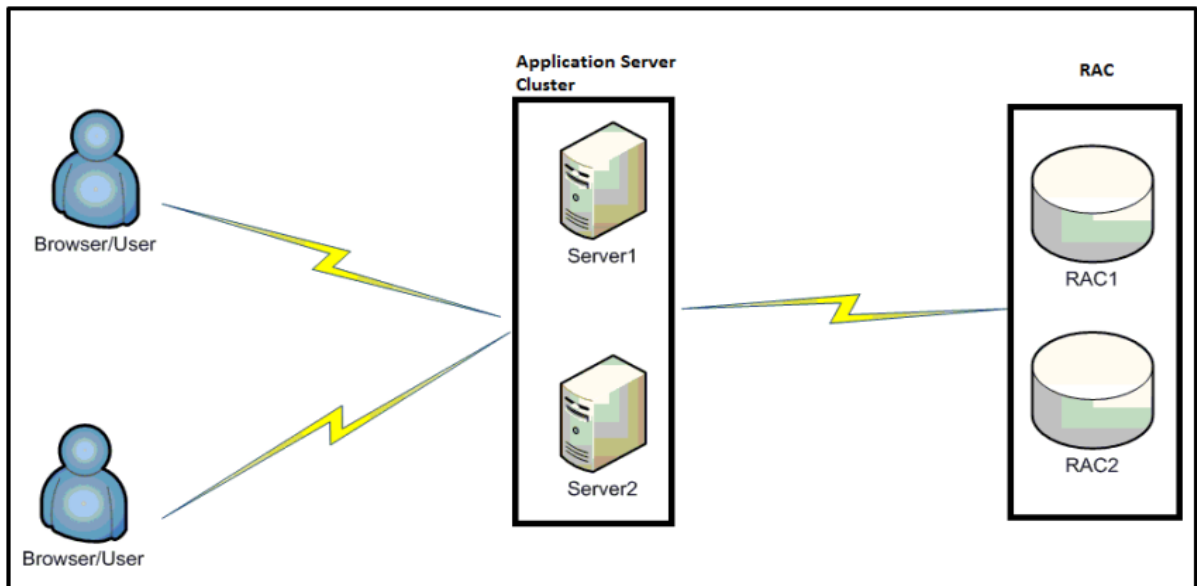
This manual is designed to help acquaint users with the deployment supported by the installer, Oracle FLEXCUBE Universal Banking Islamic Loan Origination (OFCUBILOR) should always be co-deployed along with FLEXCUBE Universal Banking (FCUBS).

1.2 Deployment Mode

This will be followed as per the Oracle FLEXCUBE Universal Banking installation.

Centralized	In this mode, there will be only one setup. The build, configuration, and deployment would be targeted to this setup alone.
-------------	---

1.2.1 Centralized



1.3 Oracle FLEXCUBE Universal Banking Islamic Loan Origination Installation

Oracle FLEXCUBE Universal Banking Islamic Loan Origination should always be co-deployed along with Oracle FLEXCUBE Universal Banking.

The Oracle FLEXCUBE Universal Banking Islamic Loan Origination patch set content needs to be copied to the Oracle FLEXCUBE Universal Banking patch set before FLEXCUBE Universal Banking installation.

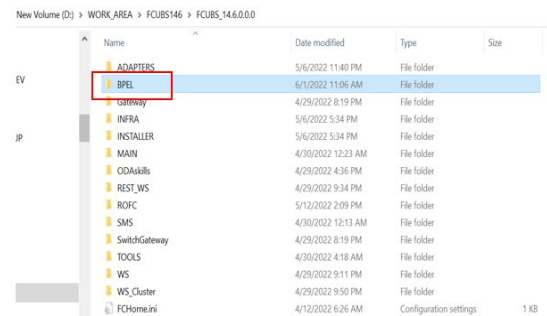
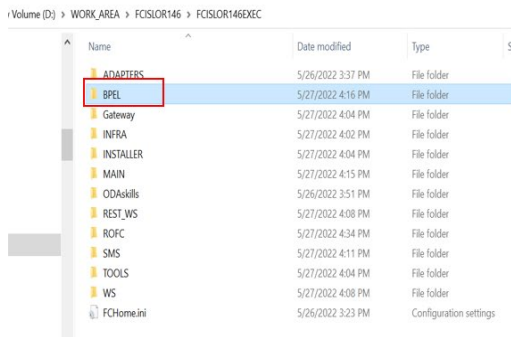
Patch set folder Extraction

- Extract the ZIP file FCISLOR_<version>.zip.
- Create a FCISLOR_<version> Folder and extract the above zip into this folder

1.3.1 Merging the BPEL folder

Copy the BPEL folder under the Oracle FLEXCUBE Universal Banking Islamic Loan Origination patch set to the Oracle FLEXCUBE Universal Banking patch set as shown in the below screenshot.

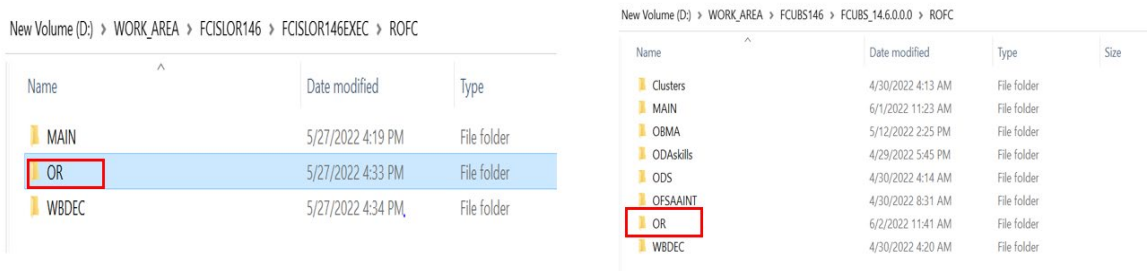
From Path (Oracle FLEXCUBE Universal Banking Islamic Loan Origination)	To Path (Oracle FLEXCUBE Universal Banking)
<FCISLOR_patch_set_folder>/BPEL	<FCUBS_patch_set_folder>/BPEL



1.3.2 Merging the OR folder

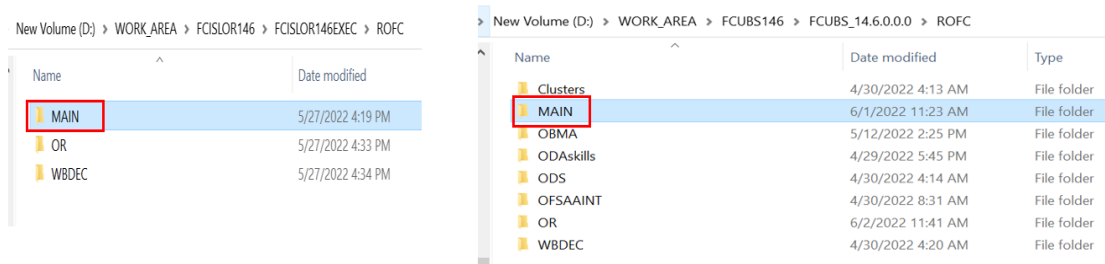
Copy the OR folder under the Oracle FLEXCUBE Universal Banking Islamic Loan Origination patch set to the Oracle FLEXCUBE Universal Banking patch set as shown in the below screenshot.

From Path (Oracle FLEXCUBE Universal Banking Islamic Loan Origination)	To Path (Oracle FLEXCUBE Universal Banking)
..ROFC/MAIN/OR	..ROFC/MAIN/



1.3.3 Merging the MAIN folder

Copy the MAIN folder under the Oracle FLEXCUBE Universal Banking Islamic Loan Origination patch set to the Oracle FLEXCUBE Universal Banking patch set as shown in the below screenshot.



1.3.4 Merging the WS folder (FCUBSORService)

Copy the FCUBSORService folder under the Oracle FLEXCUBE Universal Banking Islamic Loan Origination patch set to the Oracle FLEXCUBE Universal Banking patch set as shown in the below screenshot.

From Path (Oracle FLEXCUBE Universal Banking Islamic Loan Origination)	To Path (Oracle FLEXCUBE Universal Banking)
../WS/FCUBSORService	../WS

New Volume (D:) > WORK_AREA > FCISLOR146 > FCISLOR146EXEC > WS

Name	Date modified	Type
FCUBSCcyService	5/27/2022 4:07 PM	File folder
FCUBSCoreentitiesService	5/27/2022 4:08 PM	File folder
FCUBSORService	5/27/2022 4:08 PM	File folder
FCUBSSMService	5/27/2022 4:06 PM	File folder

New Volume (D:) > WORK_AREA > FCUBS146 > FCUBS_14.6.0.0.0 > WS

Name	Date modified	Type
FCUBSXPSService	4/29/2022 9:11 PM	File folder
FCUBSVPService	4/29/2022 9:02 PM	File folder
FCUBSUPService	4/29/2022 8:39 PM	File folder
FCUBSTDService	4/29/2022 9:01 PM	File folder
FCUBSTDFinService	4/29/2022 9:01 PM	File folder
FCUBSTDAddService	4/29/2022 9:01 PM	File folder
FCUBSSwitchService	4/29/2022 9:11 PM	File folder
FCUBSSTService	4/29/2022 9:00 PM	File folder
FCUBSSMService	4/29/2022 8:26 PM	File folder
FCUBSSIService	4/29/2022 9:10 PM	File folder

1.3.5 Installation Process

After merging the folders mentioned in the above sub-sections, the Oracle FLEXCUBE Universal Banking patch set will have Oracle FLEXCUBE Universal Banking Islamic Loan Origination plug-in sources, Oracle FLEXCUBE Universal Banking installer will install the Oracle FLEXCUBE Universal Banking Islamic Loan Origination plug-in when the installation is executed.



Installation Manual
July [2022]
Version 14.6.0.0.0

Oracle Financial Services Software Limited
Oracle Park
Off Western Express Highway
Goregaon (East)
Mumbai, Maharashtra 400 063
India

Worldwide Inquiries:
Phone: +91 22 6718 3000
Fax: +91 22 6718 3001
www.oracle.com/financialservices/

Copyright © [2022], Oracle and/or its affiliates. All rights reserved.

Oracle and Java are registered trademarks of Oracle and/or its affiliates. Other names may be trademarks of their respective owners.

U.S. GOVERNMENT END USERS: Oracle programs, including any operating system, integrated software, any programs installed on the hardware, and/or documentation, delivered to U.S. Government end users are "commercial computer software" pursuant to the applicable Federal Acquisition Regulation and agency-specific supplemental regulations. As such, use, duplication, disclosure, modification, and adaptation of the programs, including any operating system, integrated software, any programs installed on the hardware, and/or documentation, shall be subject to license terms and license restrictions applicable to the programs. No other rights are granted to the U.S. Government.

This software or hardware is developed for general use in a variety of information management applications. It is not developed or intended for use in any inherently dangerous applications, including applications that may create a risk of personal injury. If you use this software or hardware in dangerous applications, then you shall be responsible to take all appropriate failsafe, backup, redundancy, and other measures to ensure its safe use. Oracle Corporation and its affiliates disclaim any liability for any damages caused by use of this software or hardware in dangerous applications.

This software and related documentation are provided under a license agreement containing restrictions on use and disclosure and are protected by intellectual property laws. Except as expressly permitted in your license agreement or allowed by law, you may not use, copy, reproduce, translate, broadcast, modify, license, transmit, distribute, exhibit, perform, publish or display any part, in any form, or by any means. Reverse engineering, disassembly, or decompilation of this software, unless required by law for interoperability, is prohibited.

The information contained herein is subject to change without notice and is not warranted to be error-free. If you find any errors, please report them to us in writing.

This software or hardware and documentation may provide access to or information on content, products and services from third parties. Oracle Corporation and its affiliates are not responsible for and expressly disclaim all warranties of any kind with respect to third-party content, products, and services. Oracle Corporation and its affiliates will not be responsible for any loss, costs, or damages incurred due to your access to or use of third-party content, products, or services.